

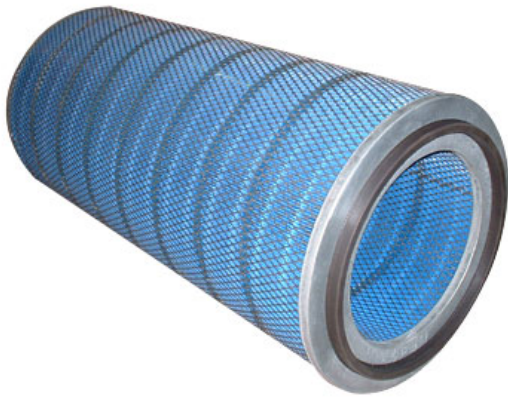


# Suzhou Glorair Purifying Equipment Co., Ltd.

Nanling Industrial Park, Luyuan, Zhangjiagang, Jiangsu, China

[www.IndustrialCleanAir.com](http://www.IndustrialCleanAir.com) [www.Glorair.com](http://www.Glorair.com)

## Cellulose Cartridge Filter



### Application:

- Widest applications, dry and granular shaped particulate
- Metal working
- Shot Blasting
- Mining industry
- Chemical
- Gas turbine

### Filter Media Types:

- 100% cellulose
- Cellulose/polyester blend
- Cellulose with flame retardant treatment
- Nano fiber

### Features:

- Lowest energy consumption to save cost
- Great filter surface and airflow
- Uniform pleat spacing is maintained

### Construction:

- Top/Bottom caps: electro galvanized plates
- Filter surface: various available
- Inner core: galvanized mesh
- Outer core: galvanized mesh / strip bands
- Gasket: urethane gasket to ensure airtight sealing

### Chemical Resistance:

- Hydrolysis resistance: Fair
- Acid resistance: Fair
- Alkaline Resistance: Fair

**Dust Release:** Good

**Applicable Temperature:** 65°C

### Standard Dimensions:

Model	O.D.	I.D.	Length	Filter Area
HS/Z3266	324mm	213mm	660mm	21.00 m <sup>2</sup>
HS/Z3566	352mm	241mm	660mm	23.00 m <sup>2</sup>
HS/Z3275	324mm	213mm	750mm	26.00 m <sup>2</sup>
HS/Z3288	324mm	213mm	880mm	27.00 m <sup>2</sup>
HS/Z3290	324mm	213mm	915mm	28.00 m <sup>2</sup>

Both the size of the cartridge and the shape of the caps are available in various specifications to meet the optimum performance of your applications.

